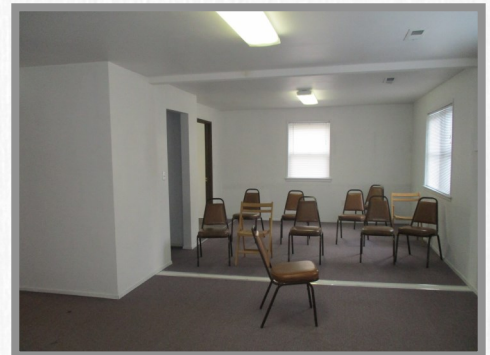


## OFFICE SPACE FOR LEASE



**2720 Oakes Avenue | Everett, WA | \$1,100 per month**

Imagine your business or organization in the heart of downtown Everett! This office space is ideal for businesses wanting to save a little money but who still need the space to grow.

Suite offers approximately 1,500sf+ of office space with built in desks, commercial grade carpet, total of 6 private offices, plus large conference or meeting room, and bathroom exclusive for suite.

This second floor has an abundance of windows for ample natural lighting. On sunny days, step outside to the roof top deck and enjoy views of the mountains and surrounding area.

Ample parking on site in downtown Everett is rare, with shared lot for building across street!

Landlord prefers a 2-3 year lease, but will discuss terms.

Bring your ideas or proposals!

**WWW.HUDSONCREG.COM/OAKES**

(206) 293-1005

Jen@HudsonCREG.com

Hudson Commercial Real Estate Group

Windermere Real Estate/M2, LLC

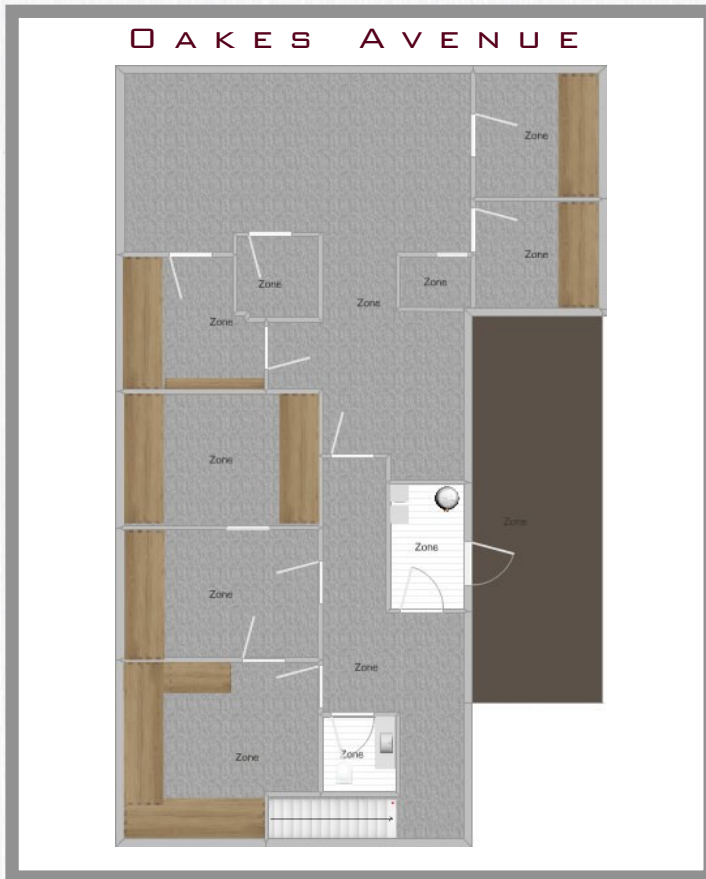
*Jen Hudson*  
Certified Commercial Advisor  
CCIM Candidate





# OFFICE SPACE FOR LEASE

## FLOORPLAN



Solid concrete block building in downtown setting, just across from Normanna Hall (also available to rent for large activities or functions!). Suite available offers approximately 1,500sf, which is the perfect size for meeting locations, non-profits, or businesses anticipating growth, especially with use of Normanna Hall for larger meeting space or events!



Available for lease at only \$1,100 per month. Tenant pays their own utility costs (such as power, internet, cable, gas, etc).  
**First, Last, & Deposit Due at Signing.**

For more information, check out [www.HudsonCREG.com/Oakes](http://www.HudsonCREG.com/Oakes) (or just scan this code with your phone.)

